

Notifying Members of ROW Clearing

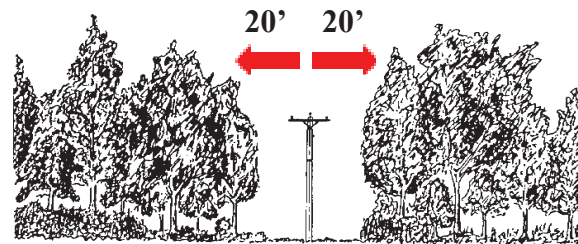
Members in townships to be cleared receive an orange postcard explaining the program and advising them to return the card if there is a concern. The card indicates that during the next several months, contractors working for Barron Electric will be clearing right-of-way in the members' area. In most townships, property owners also receive a notification of ROW clearing in their property tax statement. The contractor will attempt to make contact or leave a door hanger prior to maintaining the property, and advertisements are published in local newspapers.

Abandoned Fences

The cooperative encourages members to remove abandoned fences, thereby reducing the additional costs associated with hand-clearing. Our crews will make every effort to avoid damage to maintained fences within right-of-ways, and make repairs when damage occurs. However, if fences in ROW are not routinely maintained by property owners, Barron Electric and contractors representing Barron Electric cannot accept the responsibility of fence repair due to age and normal deterioration.



A clear right-of-way improves power quality, reliability and safety.



The removal of danger trees and leaning trees will be considered. ROW may be cleared 20 feet, ground to sky. Please communicate and clearly mark survey pins, markers or other privately owned facilities situated in the ROW work zone.

Barron Electric Cooperative
1434 State Highway 25 North
P.O. Box 40
Barron, WI 54812
Or call:
Barron: 715•537•3171
Or toll-free 800•322•1008
www.barronelectric.com

Barron Electric's Right-of-Way Clearing & Planting Guide



BARRON
Electric
COOPERATIVE - BARRON, WISCONSIN

A Touchstone Energy® Cooperative 



Keeping the Lines Clear

The Right-of-Way (ROW) Clearing Program helps reduce contact between trees and power lines. Trees and vegetation growing into the right-of-way can:

- Cause power outages
- Cause lights to blink
- Block access for maintenance and repairs
- Waste electricity by drawing it to the ground
- Become a fire hazard
- Become a safety hazard

Contractors clear trees and brush in sixty-one townships on a rotational schedule every five to six years. This may include mechanical chopping, hand-cutting and side-trimming. **No chemicals are used.** Cutting and trimming is done by trained, professional utility tree trimmers. Only primary lines are cleared, which supply power to the transformer that serves your location. The following year, Barron Electric line crews perform routine line patrol and trim trees or branches as needed along secondary wires between the transformer and your meter.

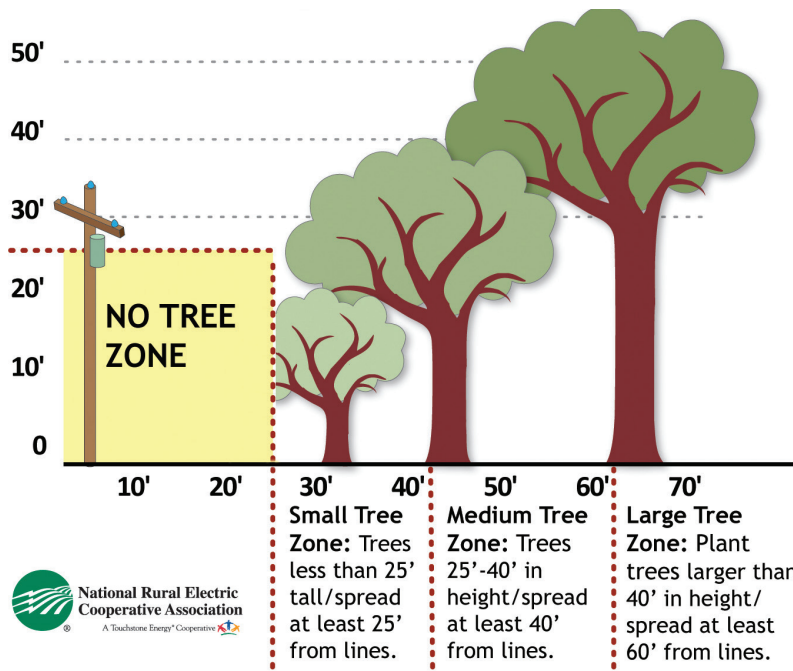
If you have trees that are growing into power lines, contact Barron Electric at 800-322-1008. Never try to cut or trim them yourself.



Can Power Lines be Buried?

In some situations, overhead power lines may be reconstructed underground for a fee. Contact the cooperative regarding costs, easements, and other requirements.

Tree Planting Guide



Keep areas around electric meters, transformers or other electrical equipment free of any vegetation that could limit utility service access.

Suggested Varieties: Shrubs (Height 4'-10')

Arrowwood
Azalea
Burning Bush
Bush Honeysuckle
Cranberry Bush
Currant
Dogwoods
Hydrangea
Juneberry
Lilac

Small-Medium Trees Height 10'- 40'

Canada Cherry
Eastern Red Cedar
Flowering Crabapple
Flowering Dogwood
Hawthorn
Ironwood

Large Trees (Height 40'+)

Amur, Sugar, Red, Silver Maples
Blue Spruce
Oak
Ash
Red/Scotch Pine

Safety First

Since trees and brush contain water, they can conduct electricity, and could be fatal to someone who comes in contact. A spark from trees or brush touching power lines can cause fires, especially during dry weather. Members should stay clear of downed power lines.



Dial 811 or
(800) 242-8511
DiggersHotline.com

What Happens to the Cut Wood and Chips?

Logs are the property of the landowner. Branches and small debris are left to decompose where they are cut. In maintained yards, branches and small debris are chipped and removed unless otherwise requested by the member, or arrangements for removal are made with the member.

We need all members' cooperation to keep a minimum of 20 feet cleared on either side of the overhead power lines.